

# **Maize Genetics Community Session:**

## **Update from US funding agencies:**

- Ann Sylvester, Program Director, PGRP
- Cliff Weil, Rotator, PGRP
- Karen Cone, Program Director, Genetic Mechanisms, MCB

## **Update from MaizeGDB:**

- Carson Andorf

## **Update from Maize Genetics Executive Committee (MGEC):**

- Karen Koch, Chair (UF) ----- Survey highlights and new initiatives
- Jianming Yu, Chair-Elect (ISU)

# **Maize Genetics Community Session:**

## **Update from US funding agencies:**

- Ann Sylvester, Program Director, PGRP
- Cliff Weil, Rotator, PGRP
- Karen Cone, Program Director, Genetic Mechanisms, MCB

## **Update from MaizeGDB:**

- Carson Andorf

## **Update from Maize Genetics Executive Committee (MGEC):**

- Karen Koch, Chair (UF) ----- Survey highlights and new initiatives
- Jianming Yu, Chair-Elect (ISU)

# **Maize Genetics Community Session:**

## **Update from US funding agencies:**

- Ann Sylvester, Program Director, PGRP
- Cliff Weil, Rotator, PGRP
- Karen Cone, Program Director, Genetic Mechanisms, MCB

## **Update from MaizeGDB:**

- Carson Andorf

## **Update from Maize Genetics Executive Committee (MGEC):**

- Karen Koch, Chair (UF) ----- Survey highlights and new initiatives
- Jianming Yu, Chair-Elect (ISU)

## **The Maize Genetics Executive Committee (MGEC):**

### **What do we do?**

- Identify needs and opportunities
- Communicate to the broadest-possible life-science community
- Help recognize some of the best among us (Awards)
- Interface with MaizeGDB and the Steering Committee (Program)

## **The Maize Genetics Executive Committee (MGEC):**

### **What do we do?**

- Identify needs and opportunities
- Communicate to the broadest-possible life-science community
- Help recognize some of the best among us (Awards)
- Interface with MaizeGDB and the Steering Committee (Program)

### **New this year:**

- RA Emmerson Award for Lifetime Achievement in Maize Genetics
- New funding and initiatives:
  - RCN (Research Coordination Network)
  - “Broadening and Energizing the Maize Genetics Research Community”

## The Maize Genetics Executive Committee (MGEC)?



Karen Koch (Chair)  
U. Florida



Jianming Yu (New Chair)  
Iowa State U.



Sean Kaepler  
U Wisconsin



Paul Chomet  
NRGene



Pat Schnable  
Iowa State U



Kathleen Newton  
Univ. Missouri



Natalia de Leon  
U. Wisconsin



Sherry Flint-Garcia  
USDA-ARS, U Missouri



Tom Brutnell  
Danforth Center



David Jackson  
Cold Spring Harbor Lab



Marilyn Wharburton  
USDA



Ed Buckler  
USDA, Cornell U.

# The Maize Genetics Executive Committee (MGEC) - Appointed members



Irina Makarevitch  
Hamline U  
USA  
Small-Collage Rep



Silvio Salvi  
U of Bologna  
Italy  
European Rep



Jianbing Yan  
Huazhong Ag U  
China  
Asian Rep



Ruairidh Sawers  
Cinvestav  
Mexico  
Latin American Rep

## Awards Committee:



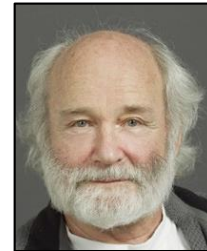
Nathan  
Springer  
U Minnesota



Sarah  
Hake  
UC Berkeley



Natalia  
De Leon  
UW-Madison



Mike  
Freeling  
UC Berkeley



Paula  
McSteen  
U Missouri



David  
Braun  
U Missouri



Jianming  
Yu  
Iowa State U



# Maize Genetics Community?

**Who are we?**

Over 350 total replies – Thank you!

**Who are we?**

Over 350 total replies – Thank you!

**Why does this matter?**

## **Who are we?**

Over 350 total replies – Thank you!

## **Why does this matter?**

**New funding:** A Research Coordination Network (RCN) proposal submitted by the Maize Genetics Executive Committee (MGEC) will be funded by the US-National Science Foundation (NSF).

# Who are we?

Over 350 total replies – Thank you!

## Why does this matter?

**New funding:** A Research Coordination Network (RCN) proposal submitted by the Maize Genetics Executive Committee (MGEC) will be funded by the US-National Science Foundation (NSF).

### **Funding will support a 5-year plan for our community:**

- The next 5 Maize Genetics Conferences
- Resources to help identify, prioritize, and target our most important needs at a community level.

# Who are we?

Over 350 total replies – Thank you!

## Why does this matter?

**New funding:** A Research Coordination Network (RCN) proposal submitted by the Maize Genetics Executive Committee (MGEC) will be funded by the US-National Science Foundation (NSF).

### **Funding will support a 5-year plan for our community:**

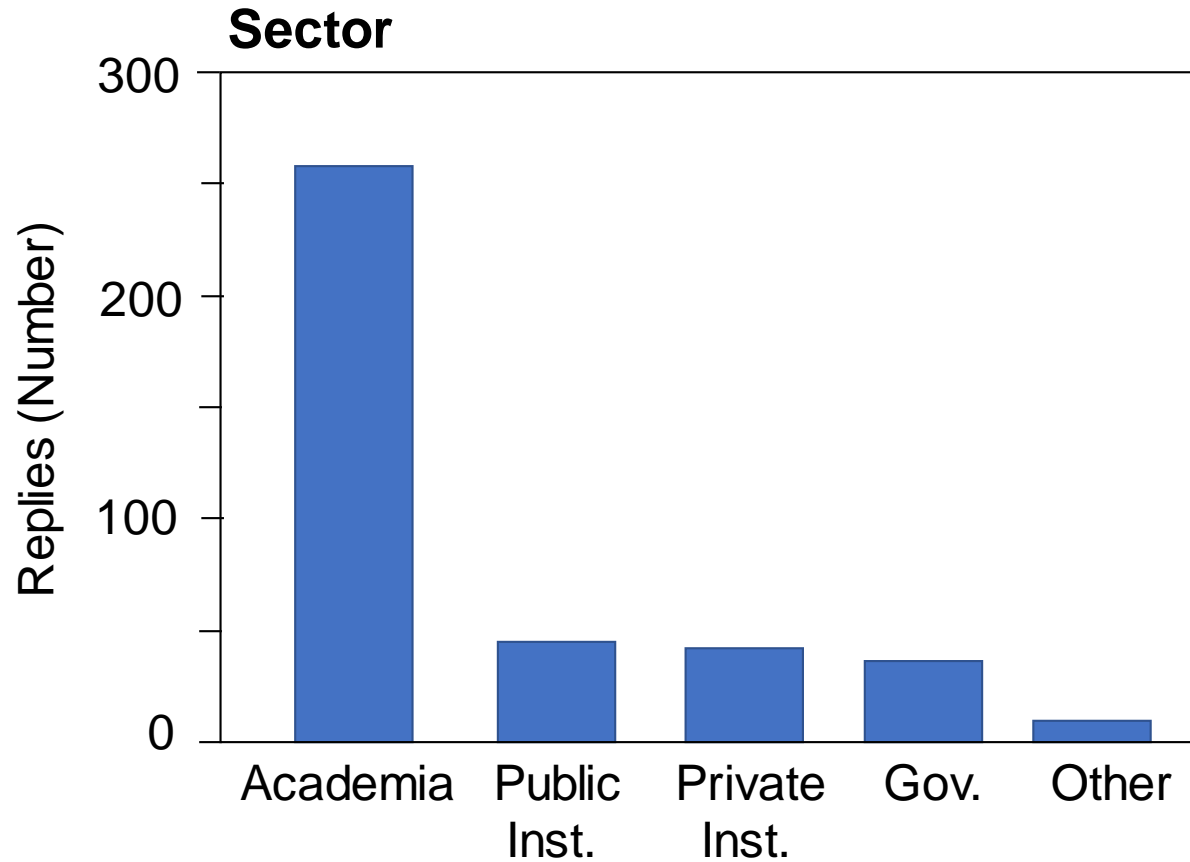
- The next 5 Maize Genetics Conferences
- Resources to help identify, prioritize, and target our most important needs at a community level.

### **We need to know:**

- What ARE our most important needs at a community level?
- How do we best increase our depth, breadth, and vibrancy?

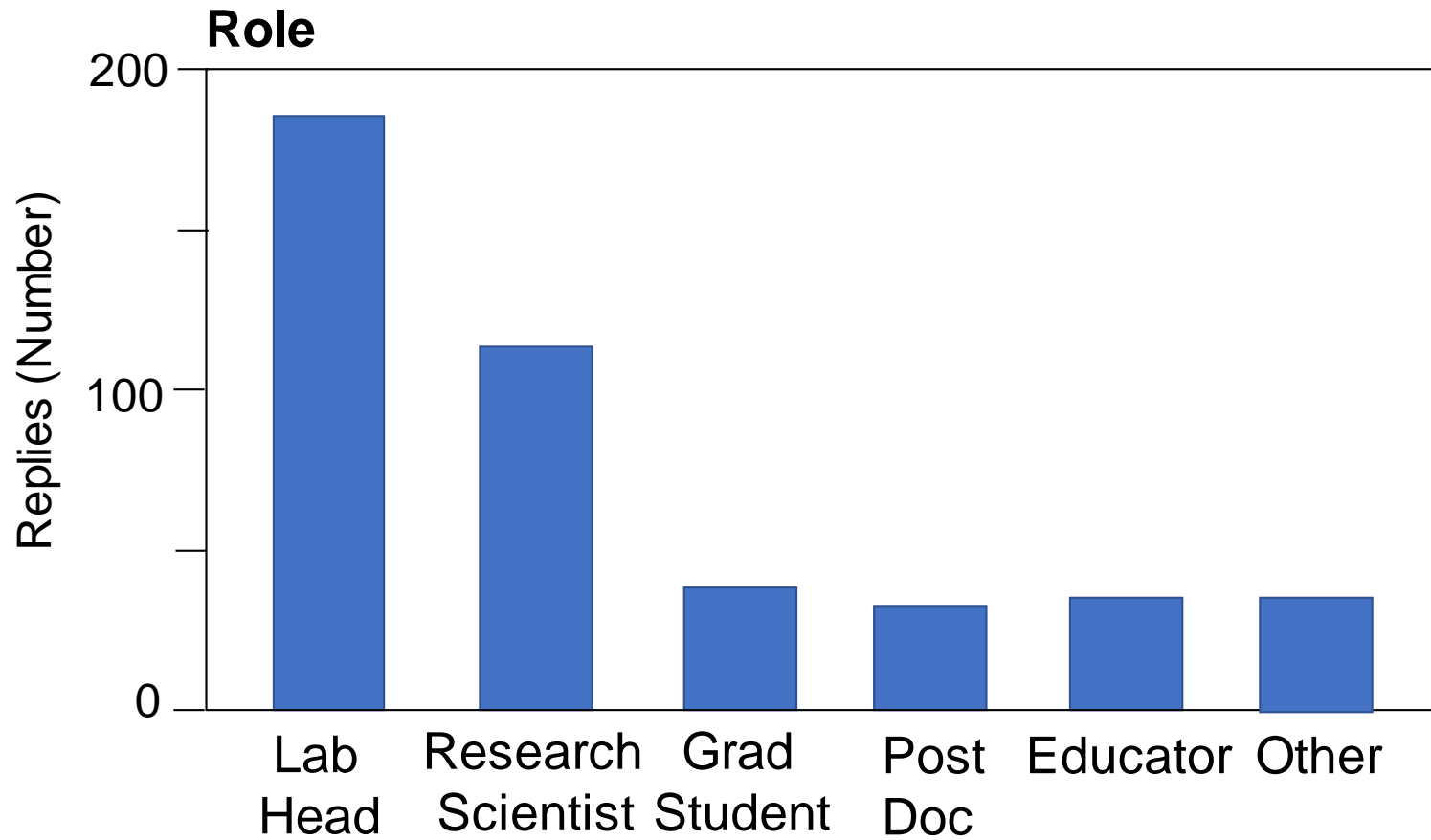
**The survey:** Over 350 total replies – Thank you!

**Who are we?** Over 350 total replies – Thank you!

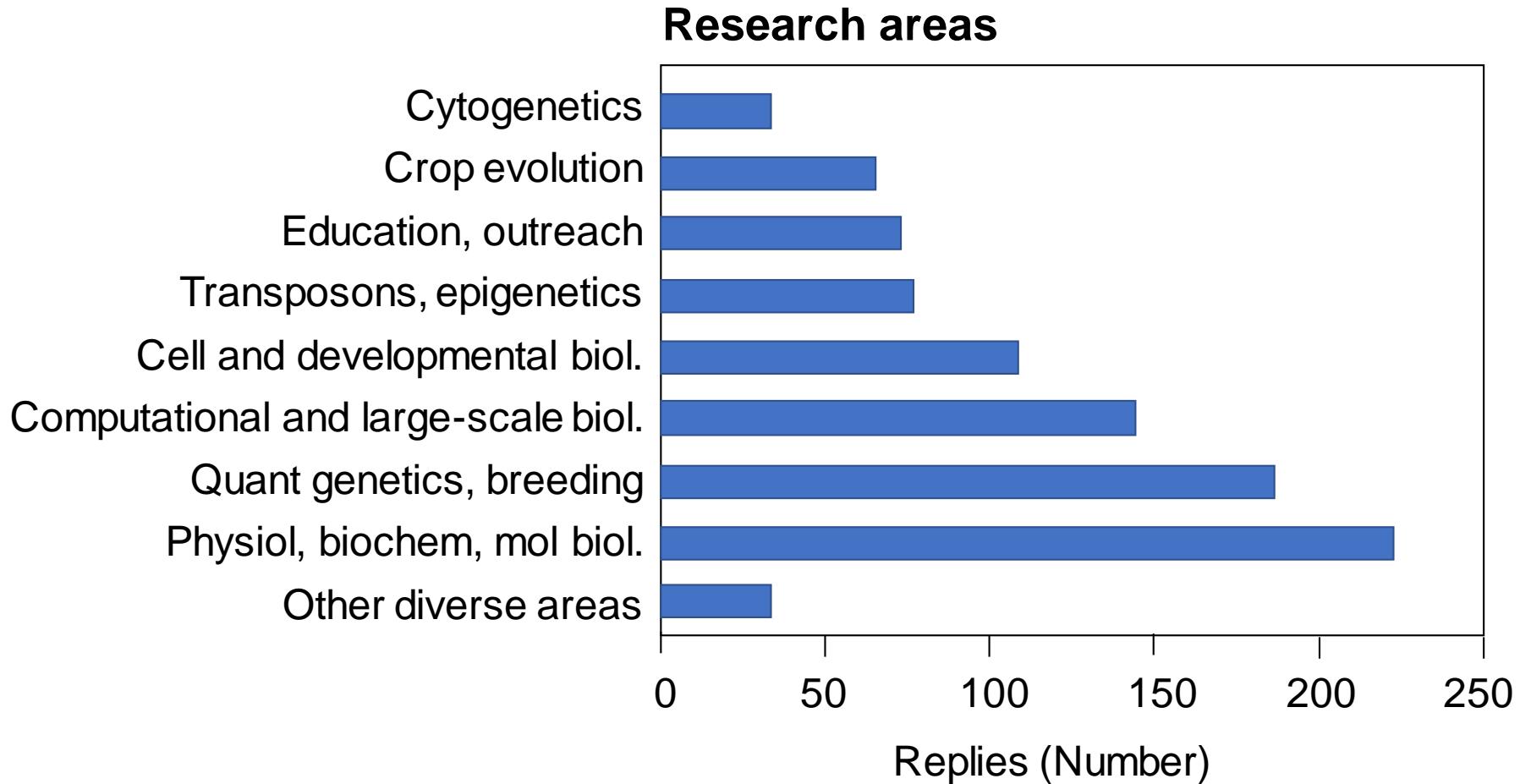




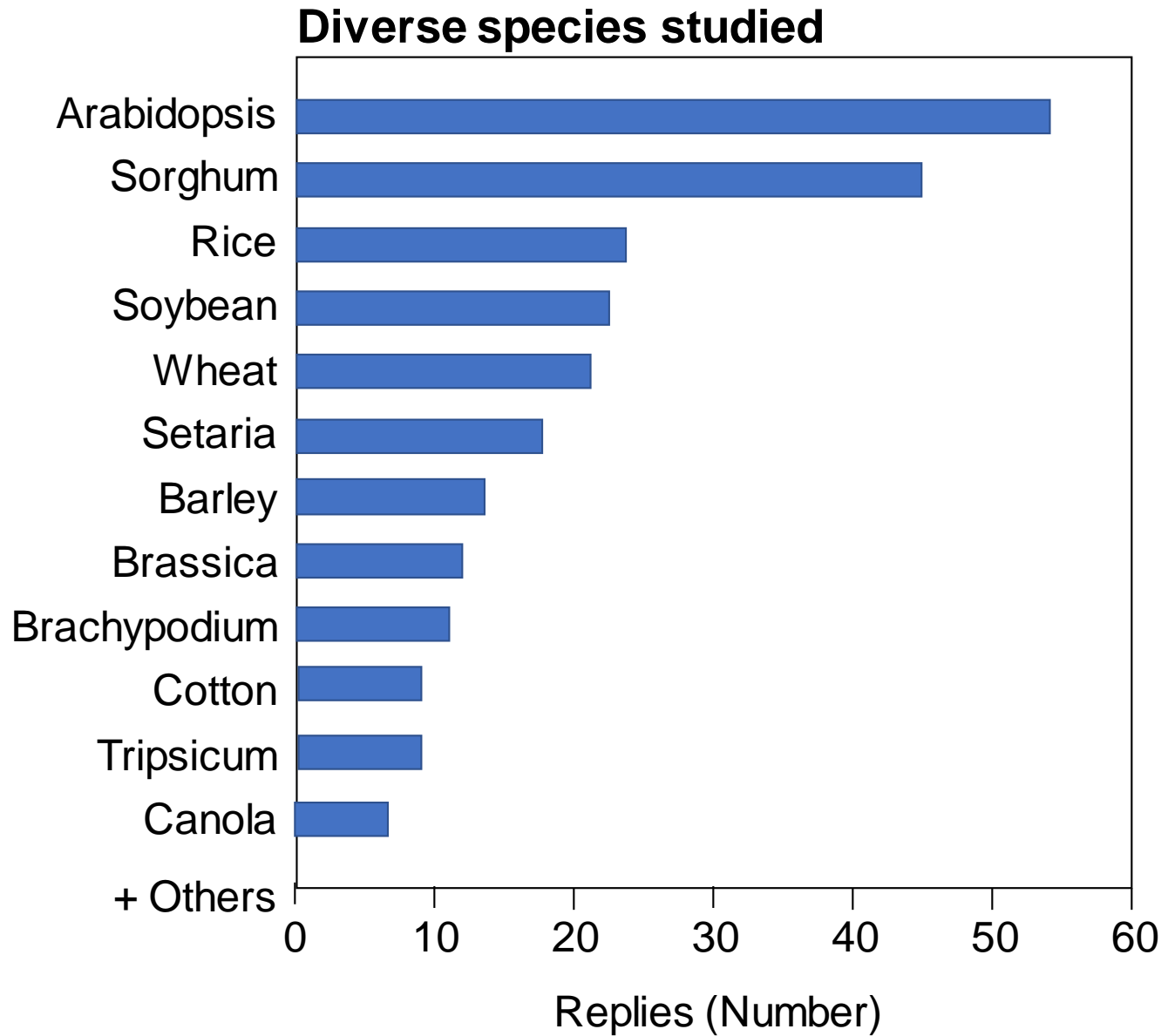
# Who are we?



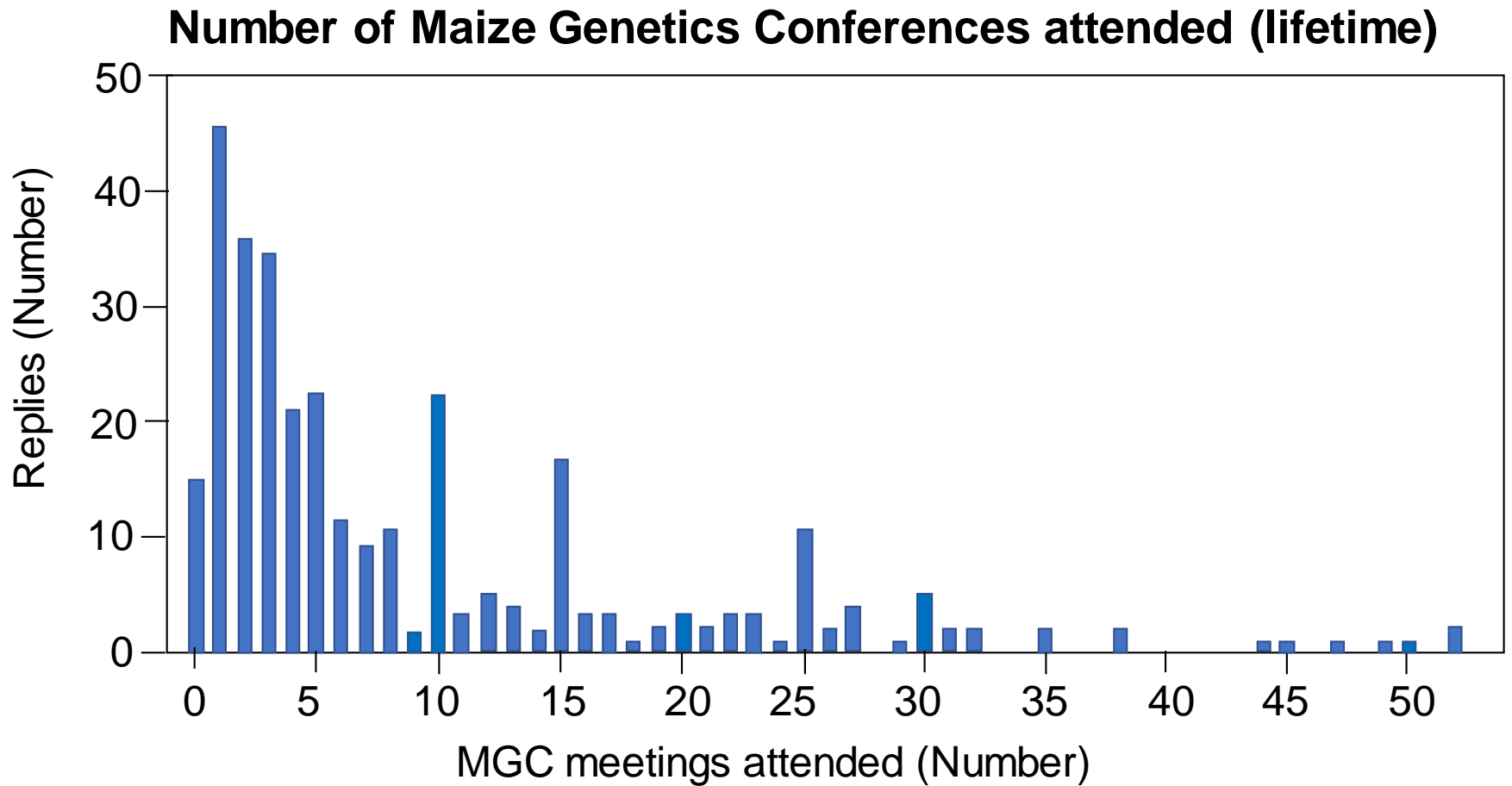
# Who are we?



# Who are we?

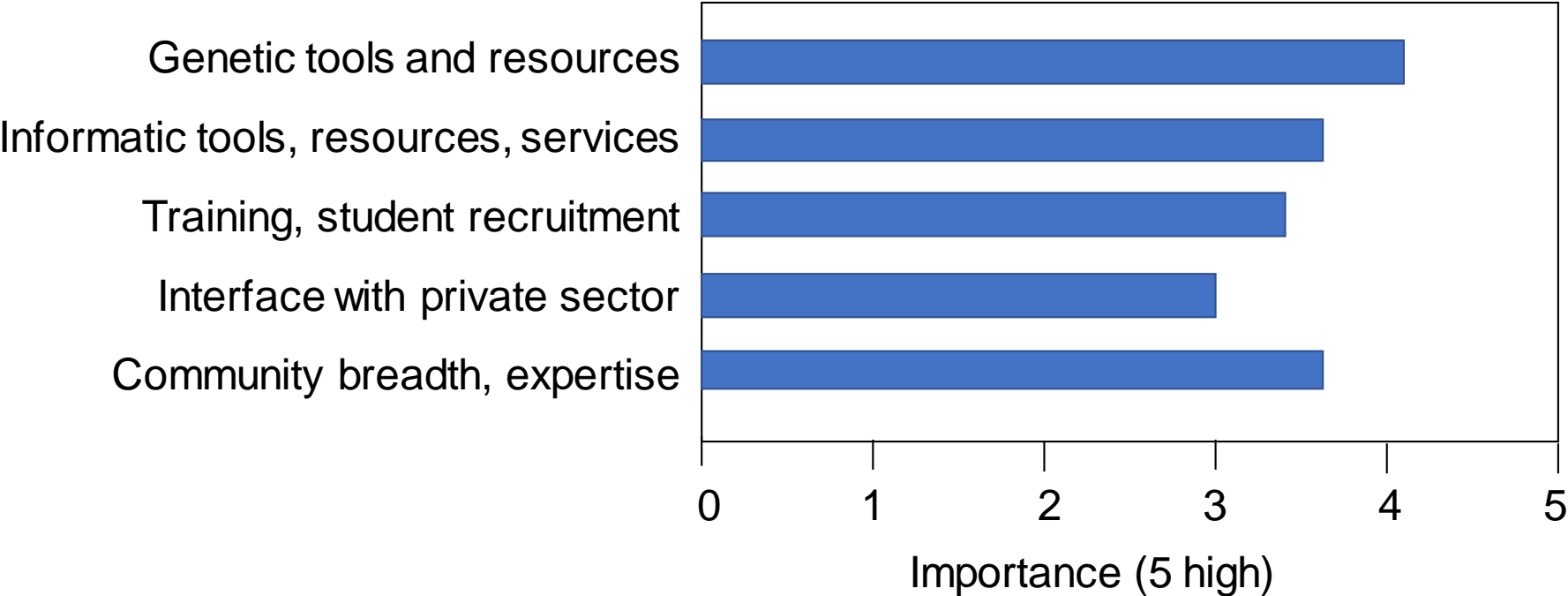


# Who are we?



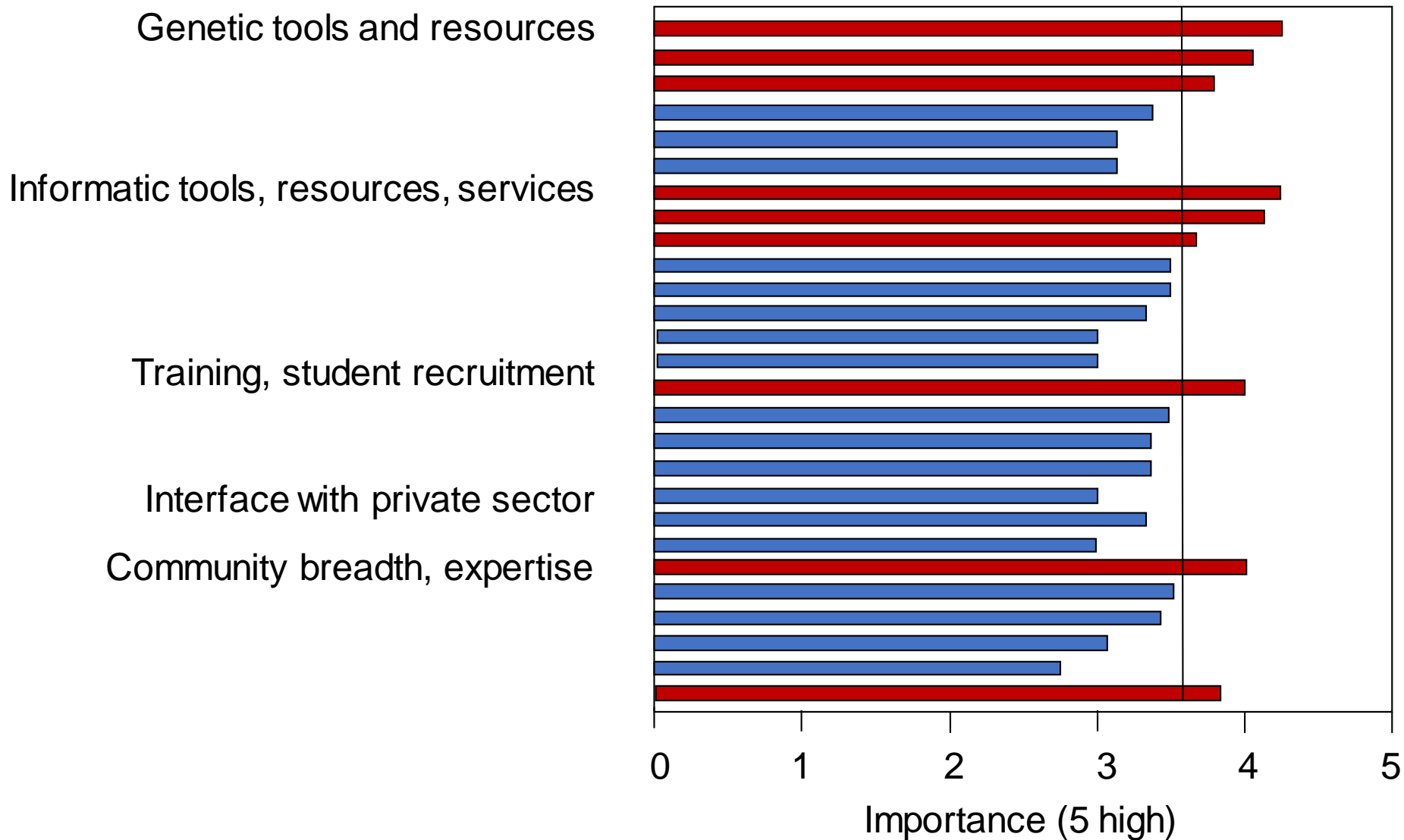
# Community-level priorities?

## Most important areas for community focus?



# Community-level priorities?

## Collective priorities



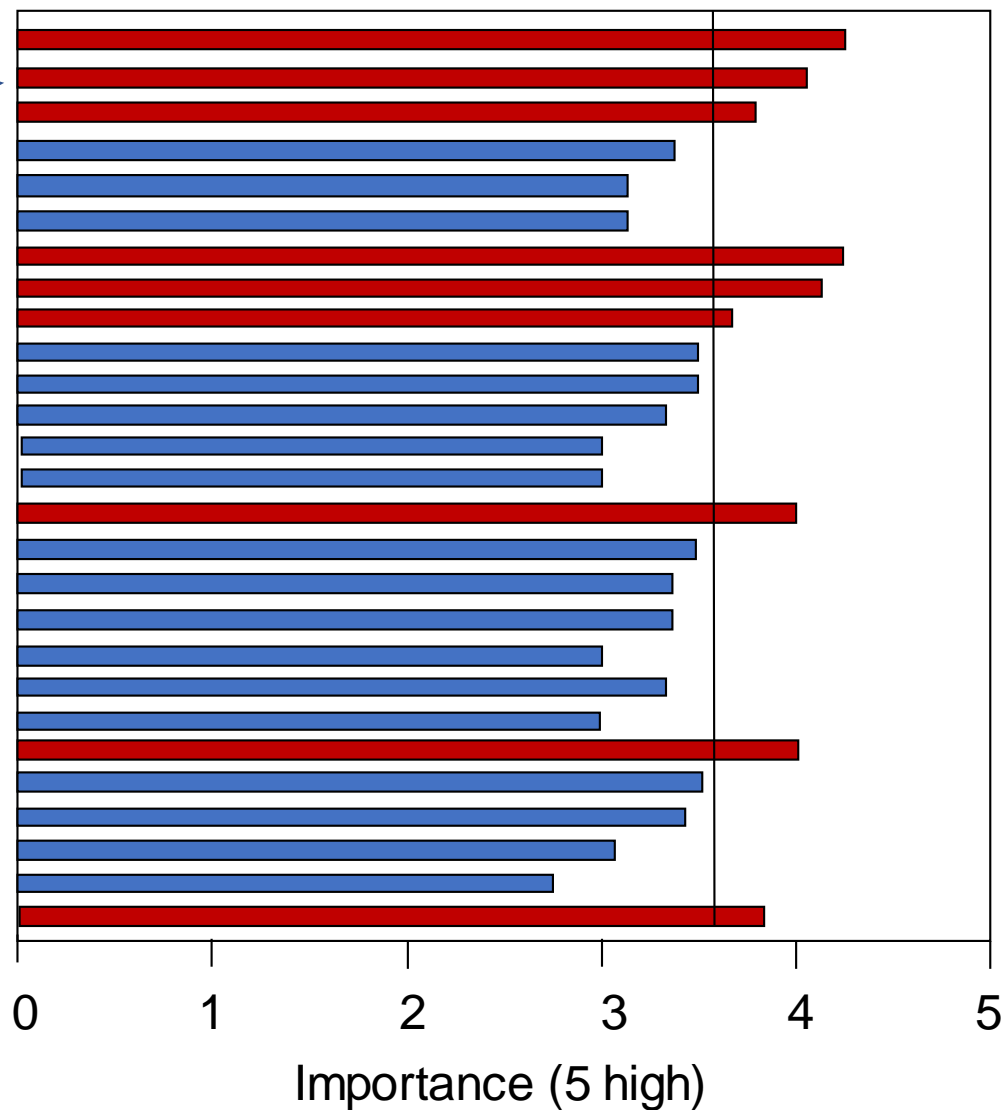
# Community-level priorities?

Maize stock centers

Transformation and gene-editing facilities

Public knockout mutant resources

## Collective priorities



# Community-level priorities?

Maize stock centers

Transformation and gene-editing facilities

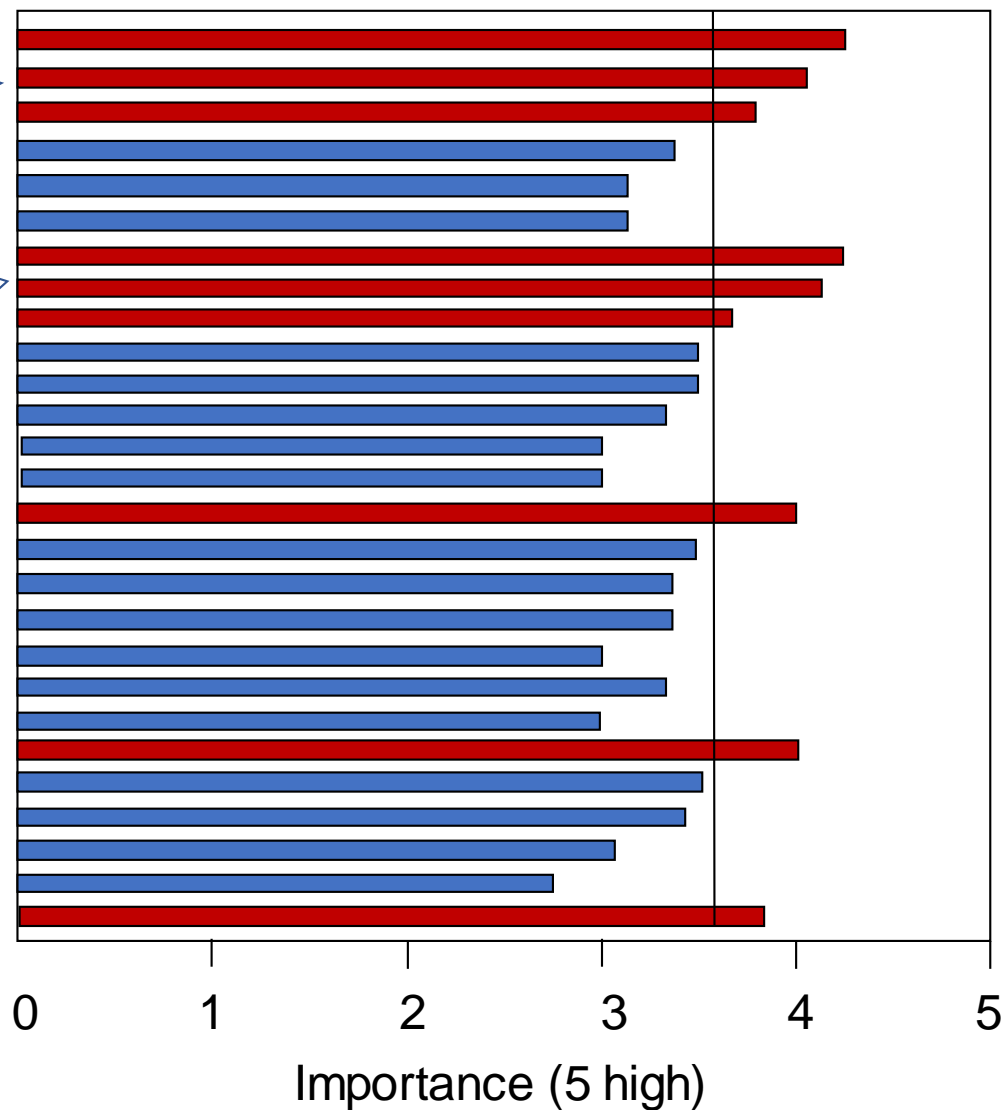
Public knockout mutant resources

Simplified access and retrieval from public databases

High-quality annotations for key inbreds

Improved tools for integration of omics data

## Collective priorities





# Community-level priorities?

Maize stock centers

Transformation and gene-editing facilities

Public knockout mutant resources

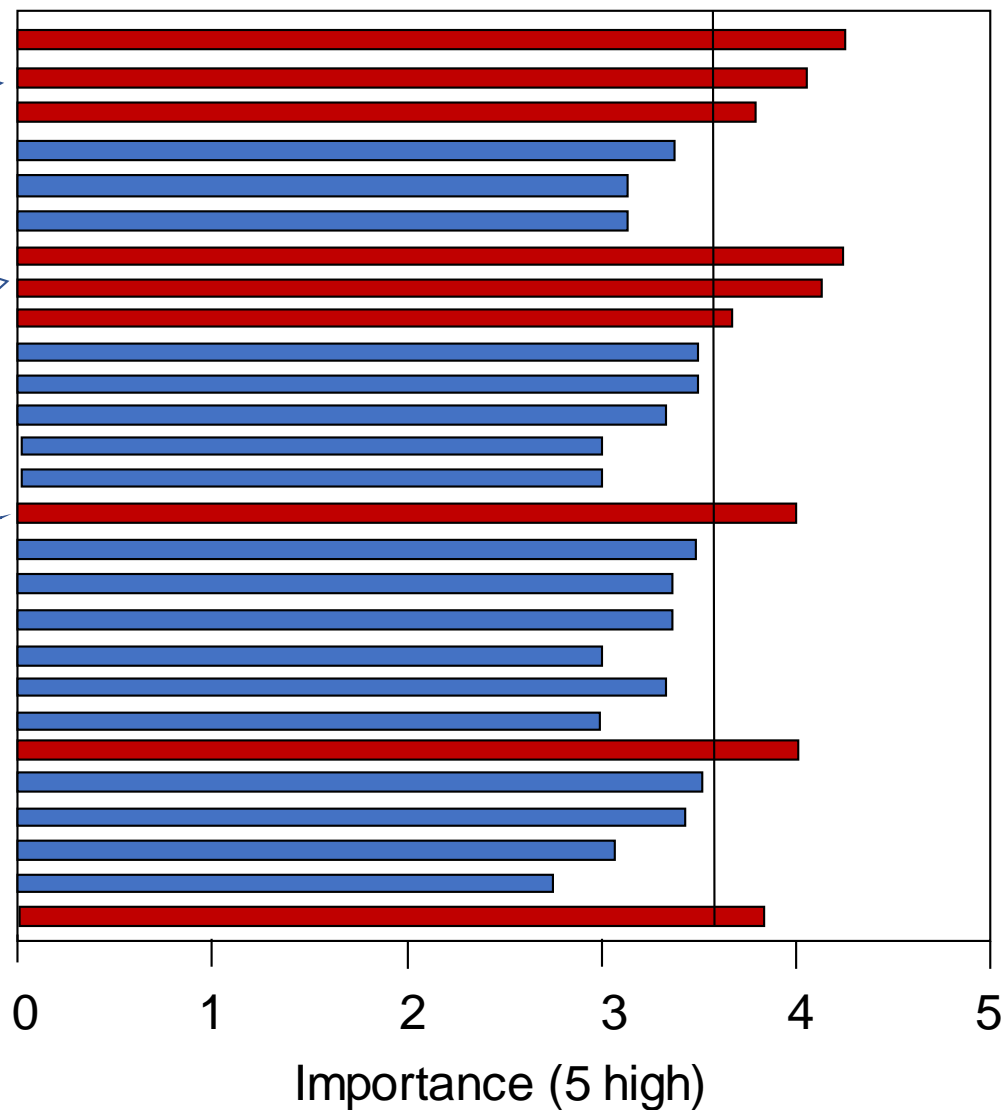
Simplified access and retrieval from public databases

High-quality annotations for key inbreds

Improved tools for integration of omics data

\$ for graduate students to attend maize meetings

## Collective priorities



# Community-level priorities?

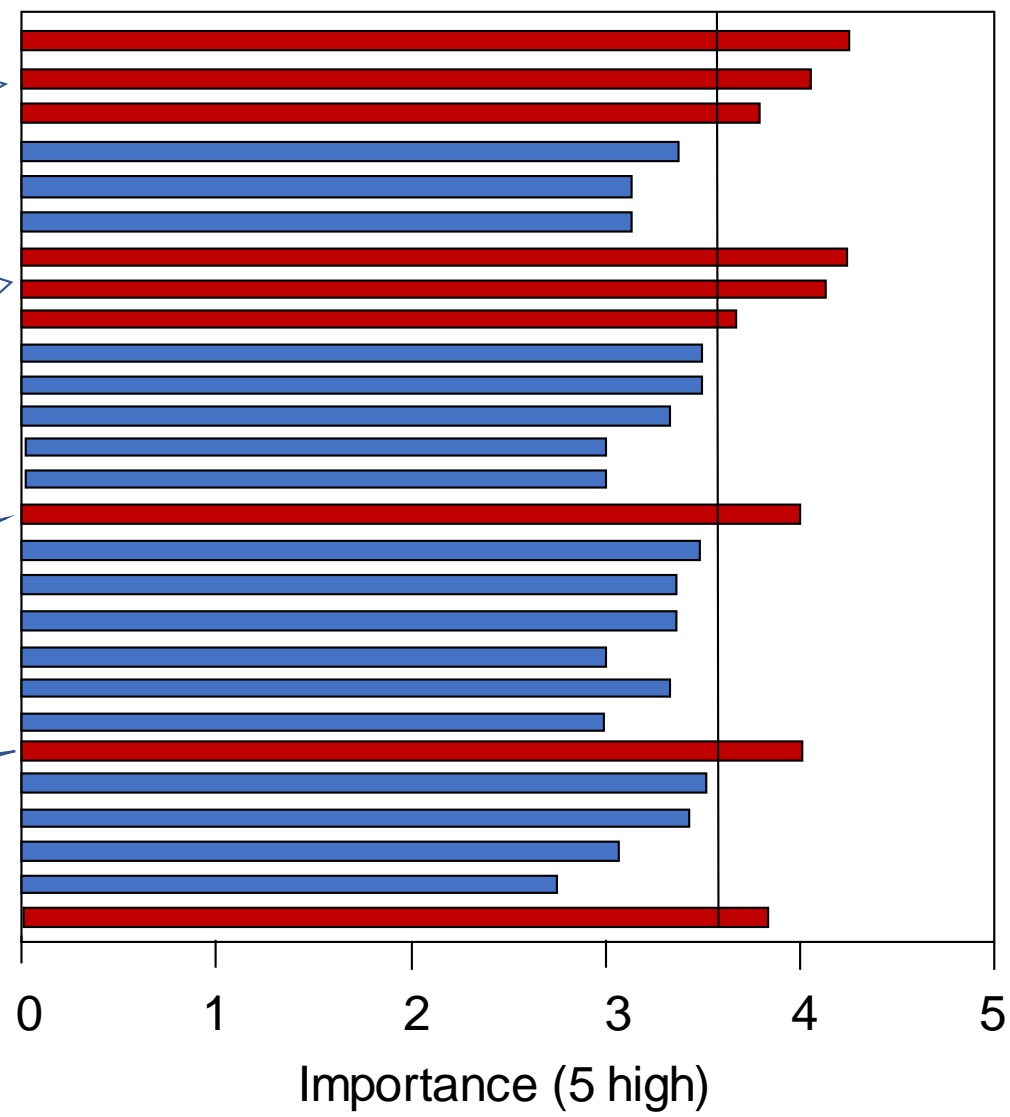
## Collective priorities

Maize stock centers  
Transformation and gene-editing facilities  
Public knockout mutant resources

Simplified access and retrieval from public databases  
High-quality annotations for key inbreds  
Improved tools for integration of omics data

\$ for graduate students to attend maize meetings

Broaden participation in MAGNet-like programs



# Community-level priorities?

## Collective priorities

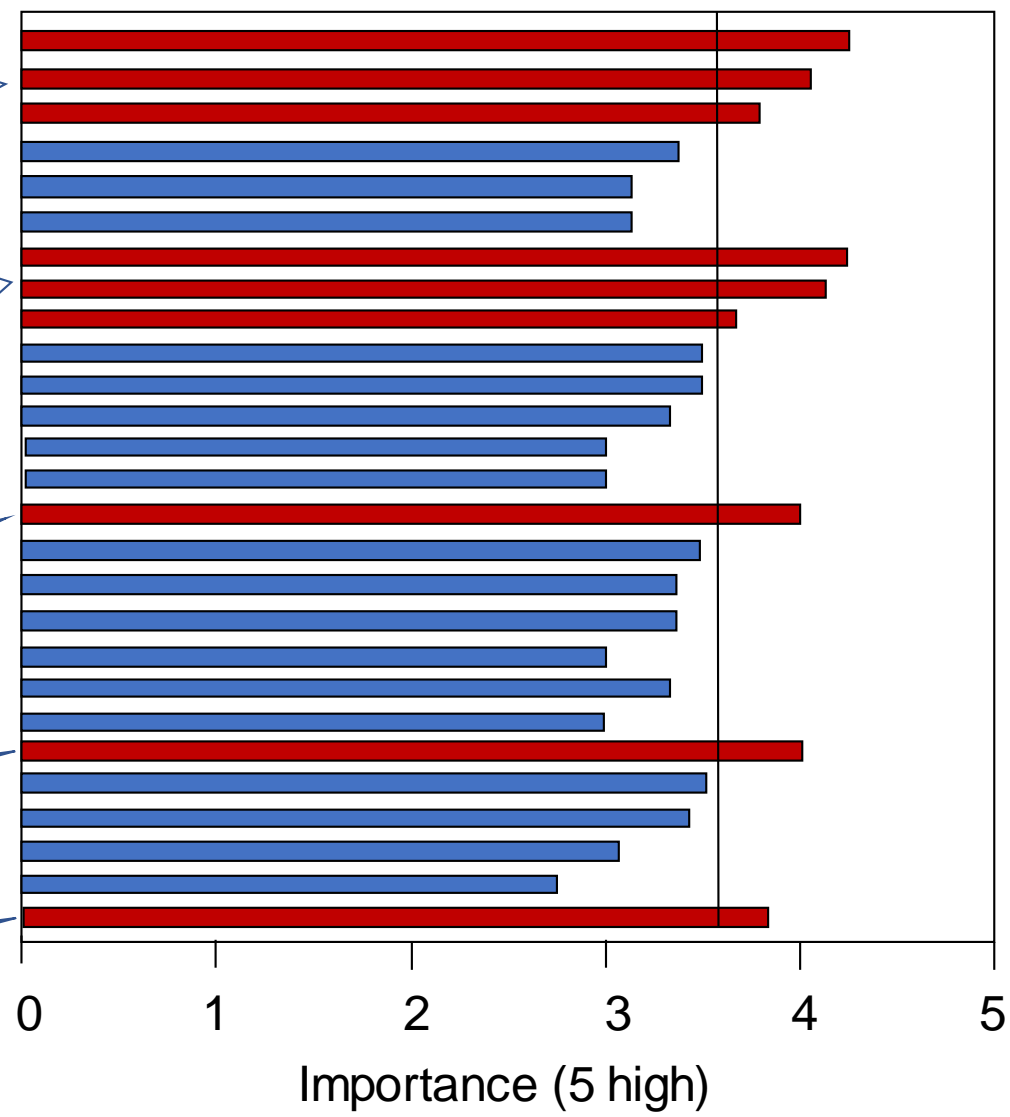
Maize stock centers  
Transformation and gene-editing facilities  
Public knockout mutant resources

Simplified access and retrieval from public databases  
High-quality annotations for key inbreds  
Improved tools for integration of omics data

\$ for graduate students to attend maize meetings

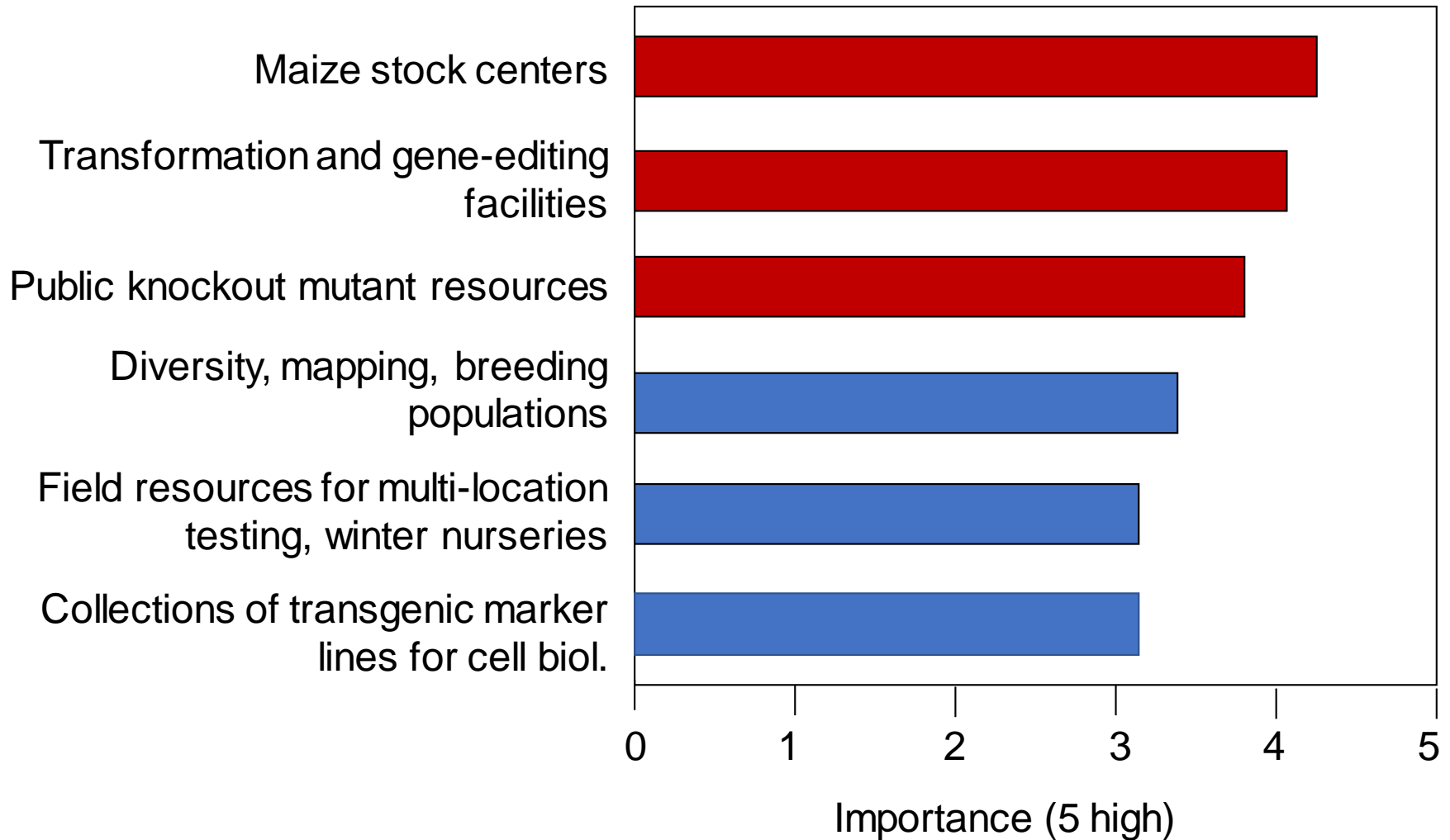
Broaden participation in MAGNet-like programs

Help support attendees from the developing world



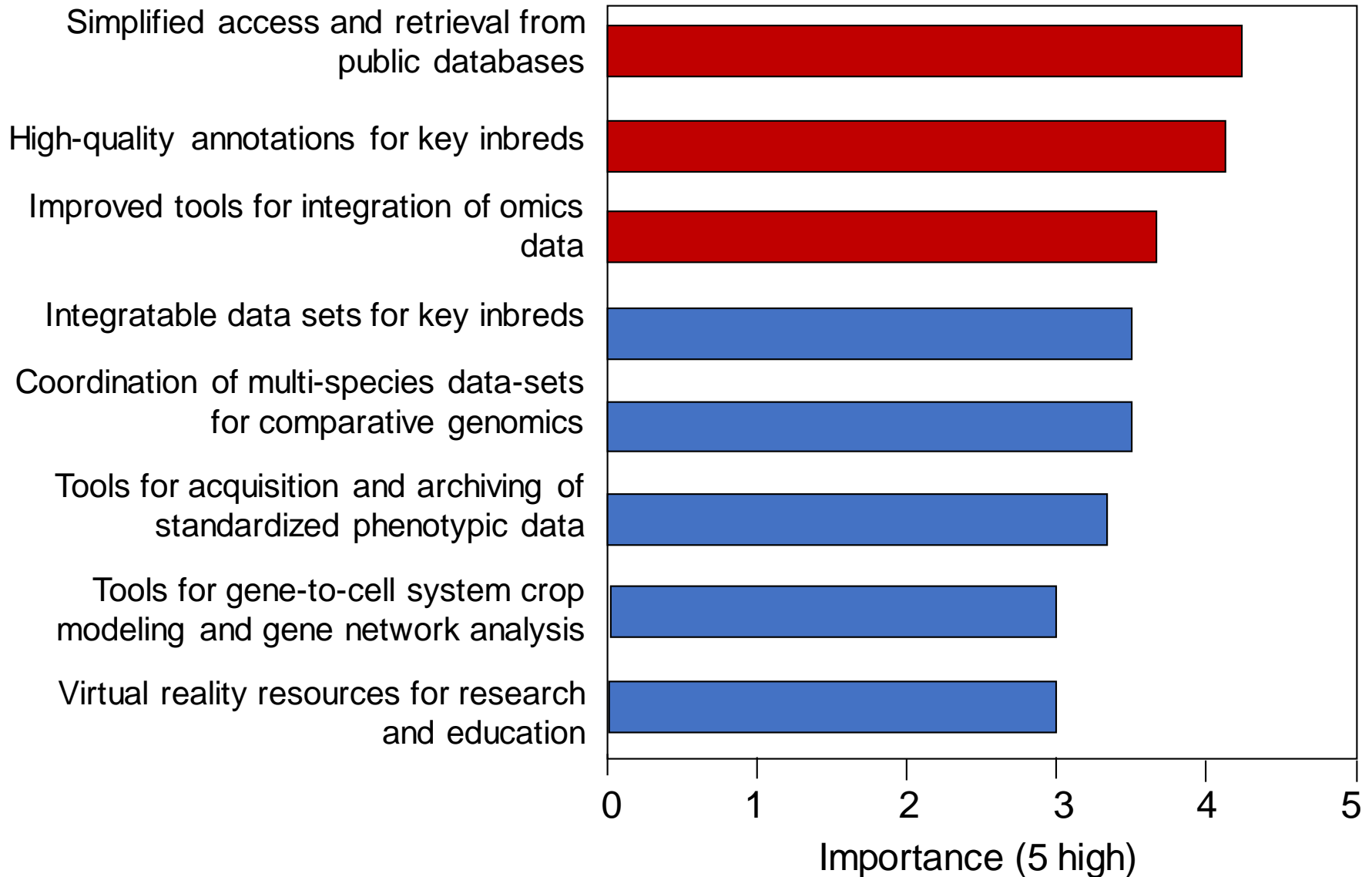
# Community-level priorities?

## Most important genetic tools and resources?



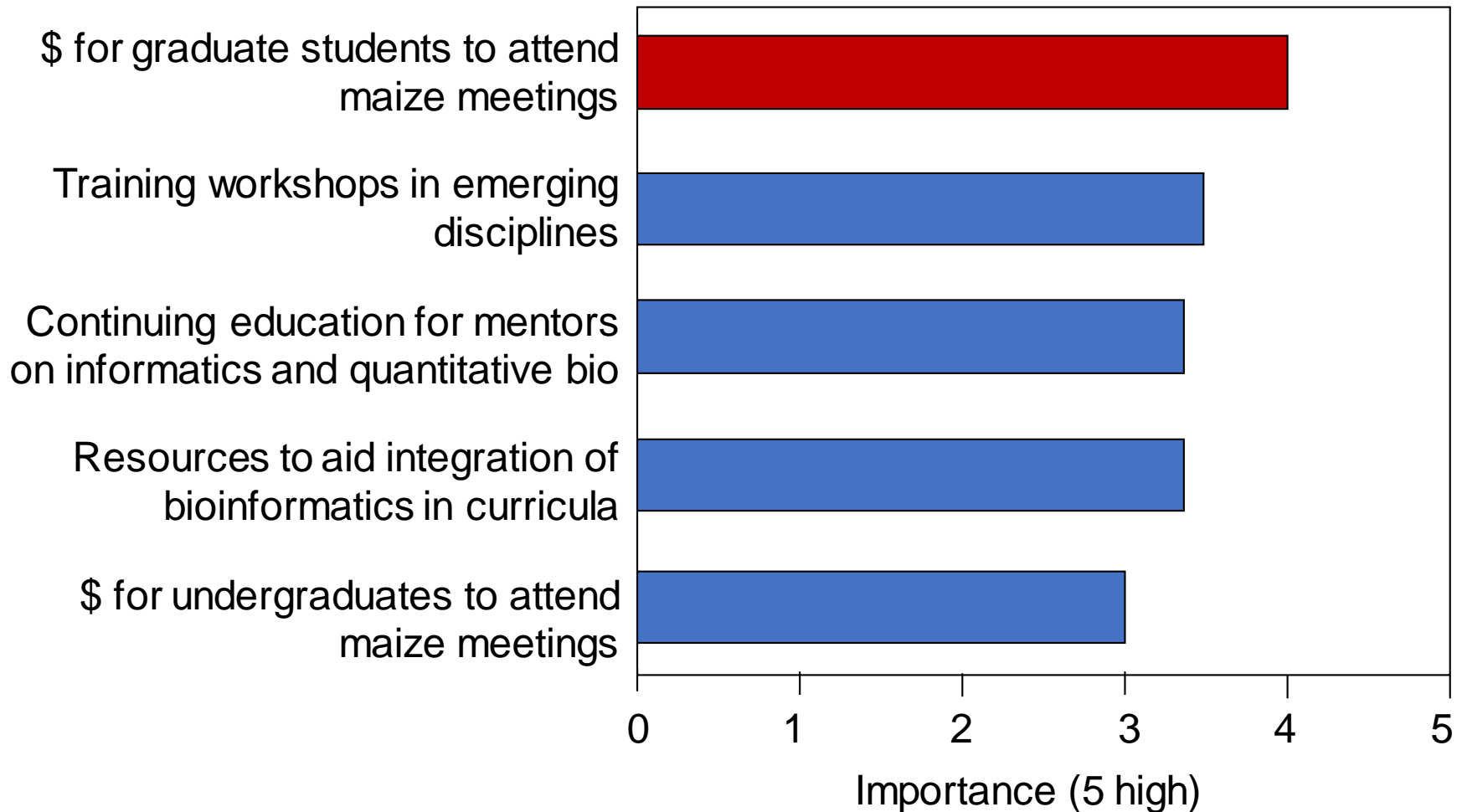
# Community-level priorities?

## Most important informatic resources?



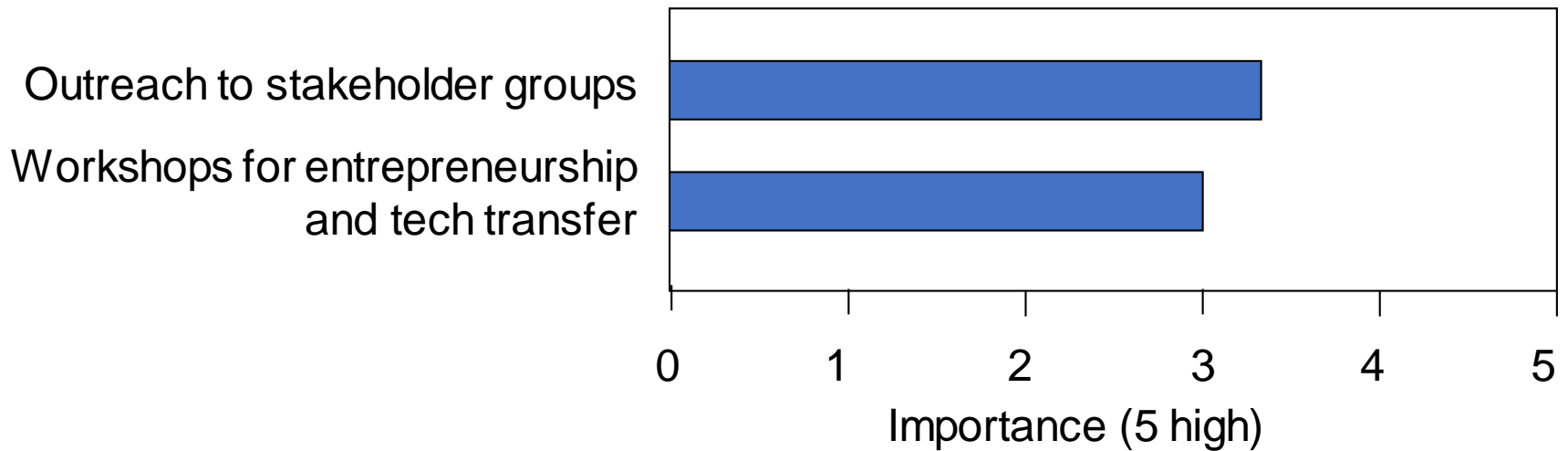
# Community-level priorities?

## Most important training and recruitment goals?



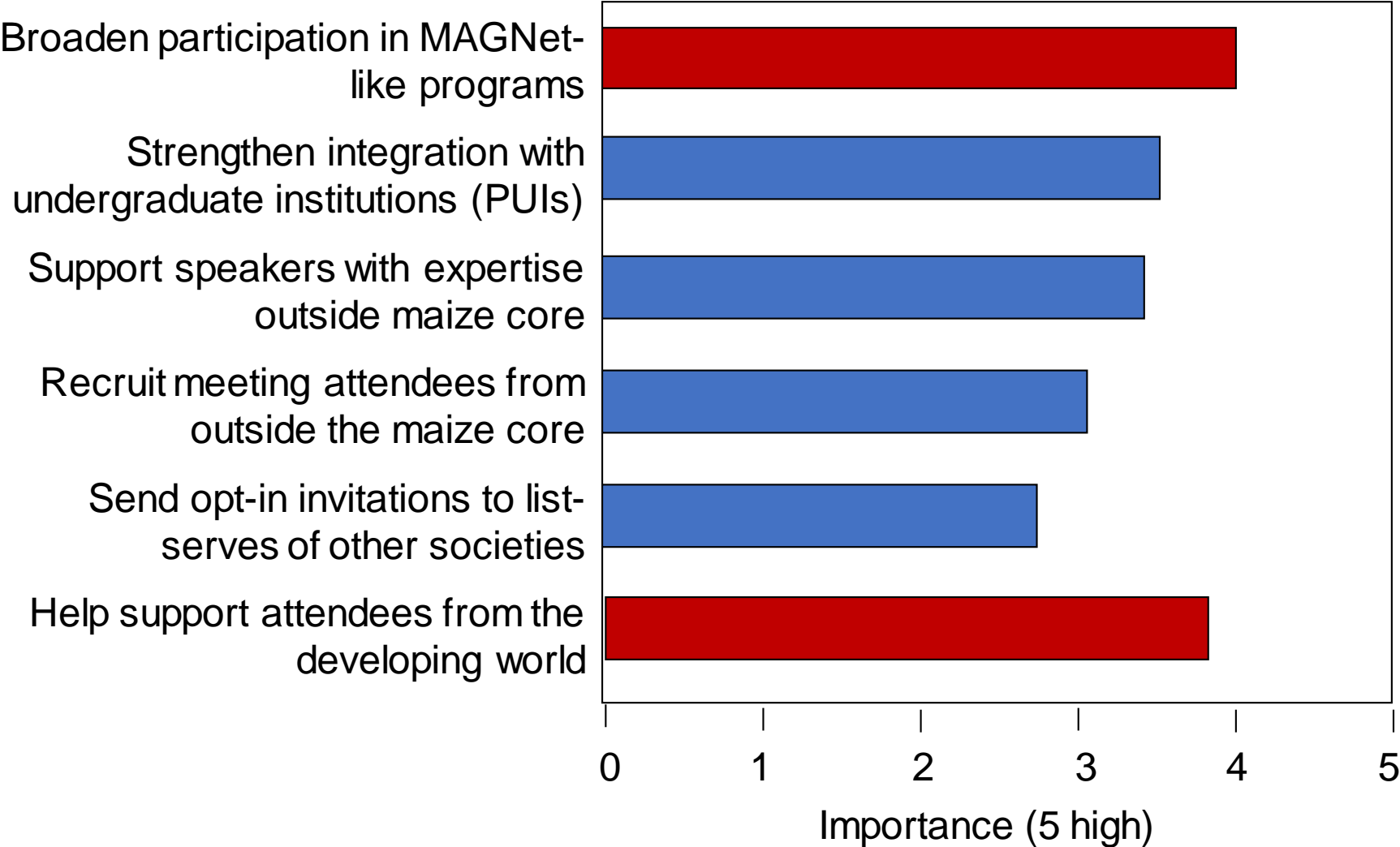
# Community-level priorities?

## Most important goals for basic to commercial?



# Community-level priorities?

## Most important aspects of breadth?





# Community-level priorities?

## Collective priorities

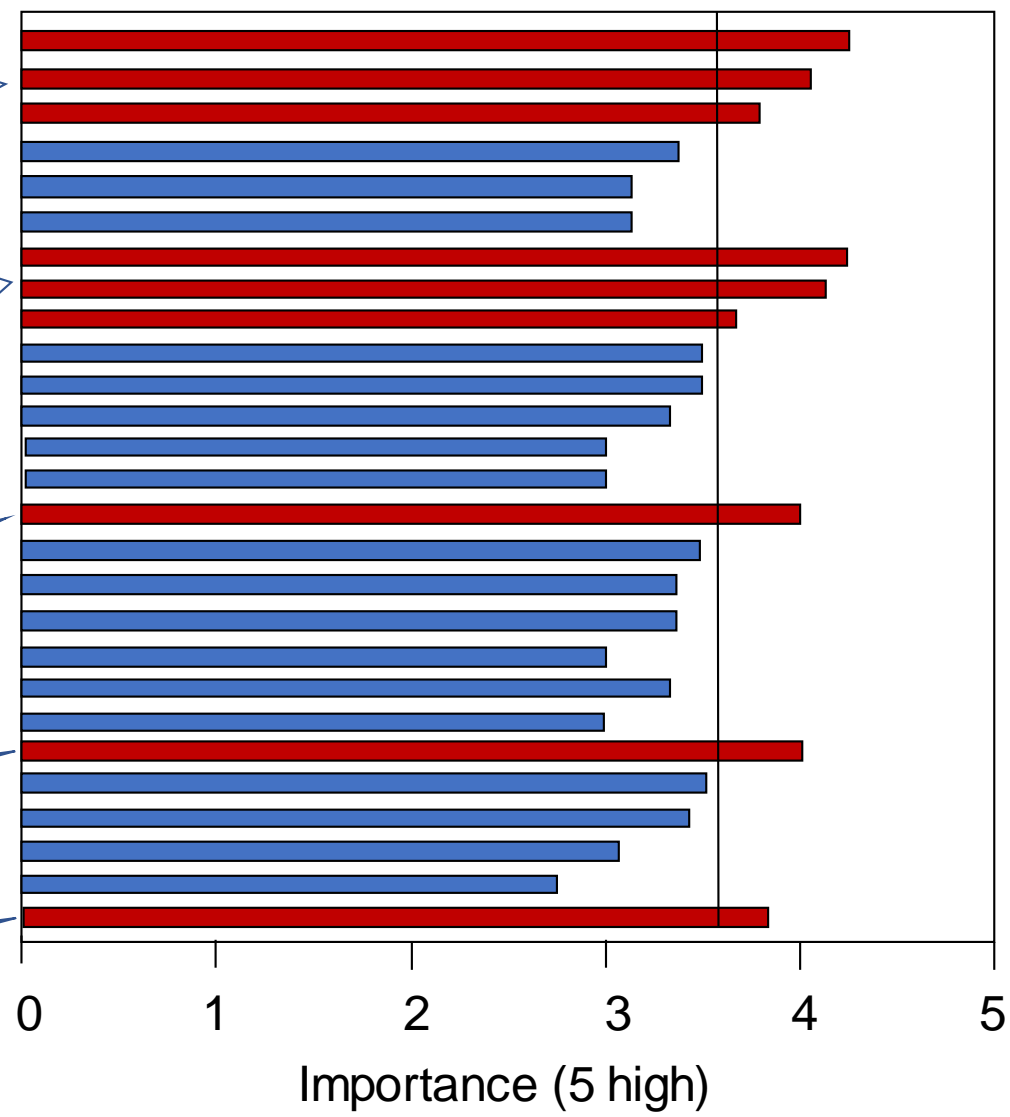
Maize stock centers  
Transformation and gene-editing facilities  
Public knockout mutant resources

Simplified access and retrieval from public databases  
High-quality annotations for key inbreds  
Improved tools for integration of omics data

\$ for graduate students to attend maize meetings

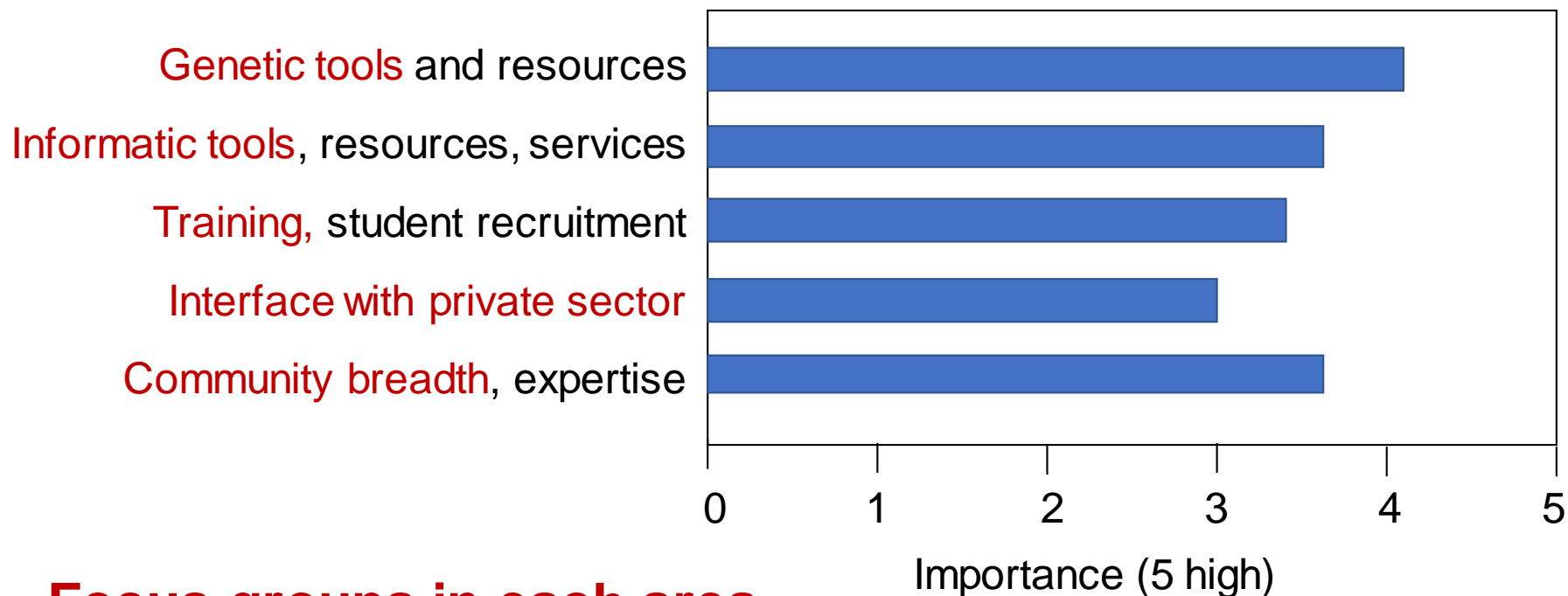
Broaden participation in MAGNet-like programs

Help support attendees from the developing world



# Community-level priorities? – **New initiatives**

## Most important areas for community focus?



**Focus groups in each area**

-- for mid-year meeting

# The Maize Genetics Executive Committee (MGEC)?



Karen Koch (Chair)  
U. Florida



Jianming Yu (New Chair)  
Iowa State U.



Sean Kaepler  
U Wisconsin



Paul Chomet  
NRGene



Pat Schnable  
Iowa State U



Kathleen Newton  
Univ. Missouri



Natalia de Leon  
U. Wisconsin



Sherry Flint-Garcia  
USDA-ARS, U Missouri



Tom Brutnell  
Danforth Center



David Jackson  
Cold Spring Harbor Lab



Marilyn Wharburton  
USDA



Ed Buckler  
USDA, Cornell U.

# The Maize Genetics Executive Committee (MGEC) - Appointed members



Irina Makarevitch  
Hamline U  
USA  
Small-Collage Rep



Silvio Salvi  
U of Bologna  
Italy  
European Rep



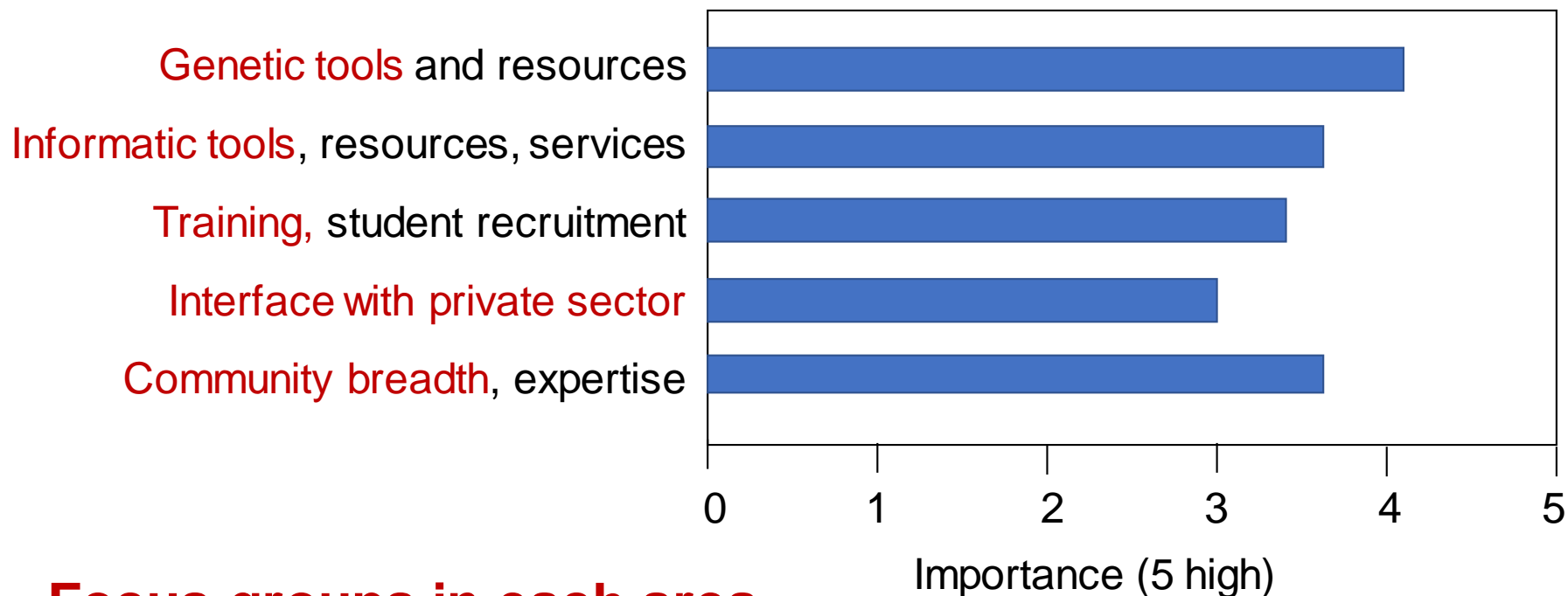
Jianbing Yan  
Huazhong Ag U  
China  
Asian Rep



Ruairidh Sawers  
Cinvestav  
Mexico  
Latin American Rep

# Community-level priorities? – **New initiatives**

## Most important areas for community focus?



**Focus groups in each area**

-- for mid-year meeting